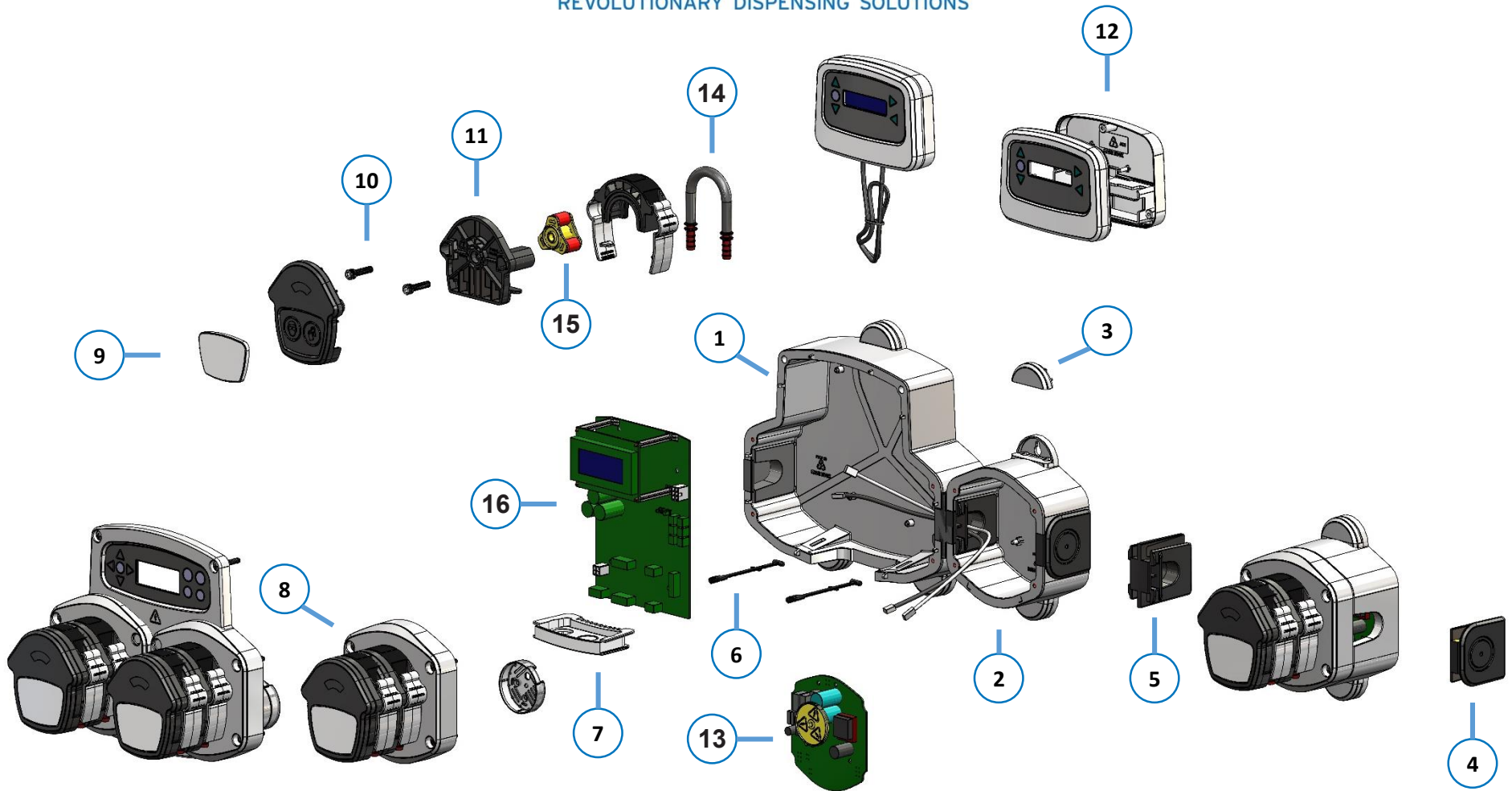


# BRIGHTWELL

REVOLUTIONARY DISPENSING SOLUTIONS



## Brightlogic Low Flow Spares Diagram

Copyright © Brightwell Dispensers Ltd. All rights reserved.

M0252 Issue 2.0  
April 2021

| Item | Stock Code | Description                            |
|------|------------|--|
| 1    | XSB051     | Dual Motor Control Enclosure           |
| 2    | XSB053     | BRIGHTLOGIC STD PUMP ENCLOSURE         |
| 3    | XSB060     | BRIGHTLOGIC SCREW COVERS -10PK         |
| 4    | XSB061     | BRIGHTLOGIC END WEDGES -10PK           |
| 5    | XSB062     | BRIGHTLOGIC LINK WEDGES -10PK          |
|      | XSB062     | FR BRIGHTLOGIC LINK WEDGES -10PK       |
| 6    | XSB063     | BRIGHTLOGIC HINGE STRAP -10PK          |
| 7    | XSB064     | BLOGIC CABLE ENTRY (DUAL)              |
| 8    | XSB103     | LOGIC DOUBLE MOTOR LID (DPH)           |
|      | XSB105     | STD ADD-ON LID (DPH)                   |
| 9    | XSB201     | BRIGHTLOGIC HF PUMP BODY 5PK           |
| 10   | XSB207     | L PUMPHEAD SCREWS (SPH)                |
| 11   | XSB211     | BRIGHTLOGIC PLAQUE X10                 |
|      | XSB214     | BLOGIC PLAQUE 160PK - 1 Colour logo 16 |
|      | XSB215     | BLOGIC PLAQUE 160PK - 2 Colour logo 16 |
| 12   | XSB069     | FORMULA SELECT COVER & MEMBRANE        |
| 13   | XSB020     | BRIGHTLOGIC ADD ON BOARD               |

| Item   | Stock Code                        | Description                       |
|--------|-----------------------------------|-----------------------------------|
| 14     | XSB303                            | LAUND PUMP TUBE: 6MM G-SIL 10PK   |
|        | XSB303NS                          | LAUND PUMP TUBE: 6MM G-SIL 10PK   |
|        | XSB303Q                           | QUICK PUMP TUBE: 6MM G-SIL 10PK   |
|        | XSB304                            | LAUND PUMP TUBE: 6MM G-SIL 50PK   |
|        | XSB343                            | LAUN PUMP TUBE: 6MM B/CHEM: 50 PK |
|        | XSB343Q                           | QUICK PUMP TUBE: 6MM B/CHEM 50PK  |
|        | XSB344                            | LAUN PUMP TUBE: 6MM B/CHEM: 50PK  |
|        | XSB344Q                           | QUIC PUMP TUBE: 6MM B/CHEM 50PK   |
|        | XSB403                            | LAUND PUMP TUBE:6MM EPDM:10PK     |
|        | XSB403Q                           | LAUND PUMP TUBE:6MM EPDM:10PK     |
|        | XSB404                            | LAUND PUMP TUBE:6MM EPDM:50PK     |
|        | XSB406                            | LAUND PUMP TUBE:6MM NEW EPDM:4PK  |
|        | XSB407                            | LAUND PUMP TUBE:6MM NEW EPDM:10PK |
| XSB408 | LAUND PUMP TUBE:6MM NEW EPDM:50PK |                                   |
| 15     | XSB202                            | LOGIC 6mm PUMP ROTOR (10pk)       |
| 16     | XSB019                            | BRIGHTLOGIC LAUNDRY BOARD         |

#### BRIGHTWELL DISPENSERS LTD

Unit 1, Rich Industrial Estate, Avis Way, Newhaven, East Sussex, BN9 0DU, UK

T +44 (0)1273 513 566 F +44 (0)1273 516 134 E sales@brightwell.co.uk W brightwell.co.uk

VAT No: GB 100 1998 47. Company registration No: 0661996. Registered in England.

**BRIGHTWELL**  
REVOLUTIONARY DISPENSING SOLUTIONS

M0252 Issue 2.0  
April 2021